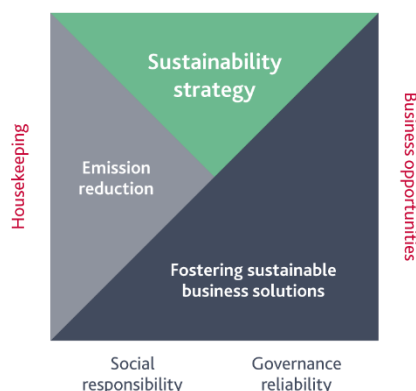


## Information for our business partners and stakeholders

# Aluminium Stewardship Initiative (ASI) certification

## 5.1 a-b Disclosure of GHG Emissions and Energy Use

We embrace our responsibility for the environment, safety and our community. This commitment must be reflected in all our actions and decisions. As a distributor and important link in the value chain, we see it as our duty to continuously improve processes in order to minimize the negative and maximize the positive impacts of our business activities. A key driver in communicating our sustainable transformation both internally and externally is our purpose statement: “We partner with customers and suppliers to deliver innovative metal solutions for a sustainable tomorrow.” This guides us in our day-to-day work. It provides direction for our employees and showcases to our customers and business partners what they can count on. In condensed form, it is expressed in our slogan, “Your partner for a sustainable tomorrow.”



Sustainability is at the heart of our [“Klöckner & Co: Leveraging Strengths”](#) strategy. We approach our dedicated sustainability strategy from an overarching environmental, social and governance (ESG) perspective and integrate it into our strategic planning.

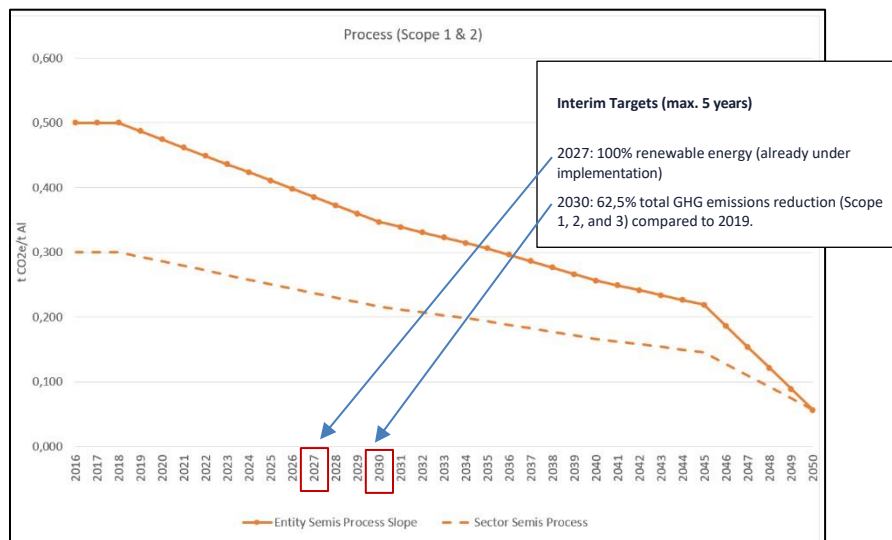
As a subsidiary of Klöckner & Co SE, Duisburg, Germany, one of the world's largest producer-independent distributors of steel and metal products, Becker Stahl-Service is one of the largest service centers in Europe with its headquarters in Bönen, Germany, location. Our CO<sub>2</sub> emissions data is consolidated into one number for the organizations Becker Stahl-Service and Becker Aluminium-Service. The annual specific GHG emissions and material energy usage, with 2021 as the base year, have been calculated on a pro-rata material tonnage output basis for Scope 1 and 2. Scope 3, Category 1 emissions are directly attributed to Becker Aluminium-Service (BAS) (\*). Our goals are in line with the SBTi goals of the Klöckner & Co Group.

(\*) The calculation for BAS values is based on the Corporate Carbon Footprint data of the Klöckner & Co Group.

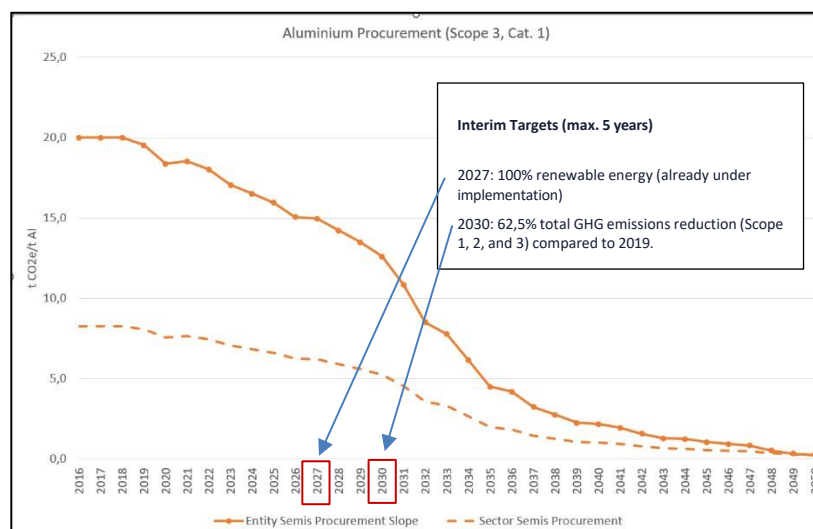
Scope 1 & 2												
Base year 2019		2020	2021	2022	2023	2024	2025	2026	2027	2028	2029	2030
Becker Scope 1 & 2 (t CO <sub>2</sub> e/yr)	BAS Scope 1 & 2 (t CO <sub>2</sub> e/yr)	BAS Scope 1 & 2 (t CO <sub>2</sub> e/yr)	BAS Scope 1 & 2 (t CO <sub>2</sub> e/yr)	BAS Scope 1 & 2 (t CO <sub>2</sub> e/yr)	BAS Scope 1 & 2 (t CO <sub>2</sub> e/yr)	BAS Scope 1 & 2 (t CO <sub>2</sub> e/yr)	BAS Scope 1 & 2 (t CO <sub>2</sub> e/yr)	BAS Scope 1 & 2 (t CO <sub>2</sub> e/yr)	BAS Scope 1 & 2 (t CO <sub>2</sub> e/yr)	BAS Scope 1 & 2 (t CO <sub>2</sub> e/yr)	BAS Scope 1 & 2 (t CO <sub>2</sub> e/yr)	BAS Scope 1 & 2 (t CO <sub>2</sub> e/yr)
3558	84	100	64	58	88	Corporate Data will be released on 12th March, 2025		See ASI Entity-THG-Pathways v1.0 Data in Emissions Plan				

Scope 3, Category 1													
Base year 2019		2020	2021	2022	2023	2024	2025	2026	2026	2027	2028	2029	2030
Becker Scope 3.01 (t CO <sup>2</sup> e/yr)	BAS Scope 3.01 (t CO <sup>2</sup> e/yr)	BAS Scope 3.01 (t CO <sup>2</sup> e/yr)	BAS Scope 3.01 (t CO <sup>2</sup> e/yr)	BAS Scope 3.01 (t CO <sup>2</sup> e/yr)	BAS Scope 3.01 (t CO <sup>2</sup> e/yr)	BAS Scope 3.01 (t CO <sup>2</sup> e/yr)	BAS Scope 3.01 (t CO <sup>2</sup> e/yr)	BAS Scope 3.01 (t CO <sup>2</sup> e/yr)	BAS Scope 3.01 (t CO <sup>2</sup> e/yr)	BAS Scope 3.01 (t CO <sup>2</sup> e/yr)	BAS Scope 3.01 (t CO <sup>2</sup> e/yr)	BAS Scope 3.01 (t CO <sup>2</sup> e/yr)	BAS Scope 3.01 (t CO <sup>2</sup> e/yr)
1886487	44710	58161	85933	90701	32723	Corporate Data will be released on 12th March, 2025	See ASI Entity-THG-Pathways v1.0 Data in Emissions Plan						

The results of the entity have been entered into the ASI's Excel based calculation tool. This methodology ensures GHG Emissions Reduction Pathway consistency with a 1.5°C warming scenario.



Source: ASI Entity-THG-Pathways-Method v1.0



Source: ASI Entity-THG-Pathways-Method v1.0

## 5.3 a-e GHG Emissions Reduction Plans

### 1. Introduction

Becker Aluminium-Service GmbH is committed to the continuous reduction of its greenhouse gas (GHG) emissions in accordance with the requirements of the Aluminium Stewardship Initiative (ASI). The objective of this plan is to define a clear reduction pathway for our GHG emissions and systematically implement measures to mitigate emissions.

### 2. Objective

Our GHG emissions reduction pathway aligns with a scientifically based climate scenario that aims to limit global warming to 1.5°C. To achieve this, we follow a long-term strategy with measurable interim targets.

### 3. Scope

This plan covers all direct and indirect GHG emissions of Becker Aluminium-Service GmbH across the entire value chain.

### 4. Interim Targets (max. 5 years)

To ensure effective emissions management, the following reduction targets have been defined:

- 2027: 100% renewable energy (already under implementation)
- 2030: 62,5% total GHG emissions reduction (Scope 1, 2, and 3) compared to 2019.

### 5. Measures for Emission Reduction

To achieve these targets, the following measures will be / have been implemented and are supported by our ISO 50001 Energy Management certification:

- Energy efficiency measures: Optimization of production processes and integration of energy-saving technologies is continuous work-in-progress.
- Use of renewable energy: Transition to green electricity and solar energy at production sites has been completed.
- Reduction of material losses: Improving material efficiency to minimize waste is continuous work-in-progress.
- Sustainable logistics: Promoting climate-friendly transportation and optimizing supply chains is continuous work-in-progress. Climate-friendly transportation can already be offered for an approx. 100 km radius.

## 6. Review and Adjustment

- The GHG Emissions Reduction Plan will be reviewed annually and adjusted if necessary.
- Any company changes that impact GHG emissions will trigger an immediate evaluation of the plan.

## 7. Publication and Progress Reports

To ensure transparency, the following documents will be published annually:

- The latest version of the GHG Emissions Reduction Pathway.
- The latest version of the GHG Emissions Reduction Plan.
- The annual progress report on plan implementation.

## 8. Conclusion

Becker Aluminium-Service GmbH recognizes its responsibility to reduce greenhouse gas emissions and is committed to contributing to climate goals through sustainable actions.

Bönen, February 13, 2025



Hasso Haibach

CEO



Ralf Schmid

Managing Director



Becker Aluminium-Service GmbH  
Wegfelder Str. 57  
59199 Bönen

René Klöpper

Expert Sustainability