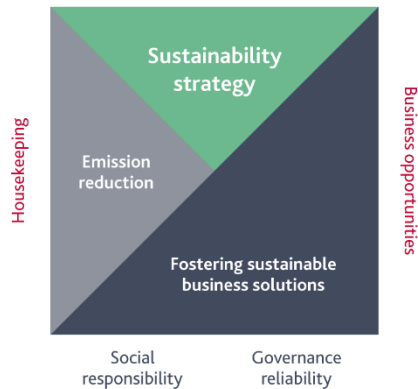


Information for our business partners and stakeholders

Aluminium Stewardship Initiative (ASI) certification

§ 5.1 a-b Disclosure of GHG Emissions and Energy Use

We embrace our responsibility for the environment, safety and our community. This commitment must be reflected in all our actions and decisions. As a distributor and important link in the value chain, we see it as our duty to continuously improve processes in order to minimize the negative and maximize the positive impacts of our business activities. A key driver in communicating our sustainable transformation both internally and externally is our purpose statement: “We partner with customers and suppliers to deliver innovative metal solutions for a sustainable tomorrow.” This guides us in our day-to-day work. It provides direction for our employees and showcases to our customers and business partners what they can count on. In condensed form, it is expressed in our slogan, “Your partner for a sustainable tomorrow.”



Sustainability is at the heart of our [“Klöckner & Co: Leveraging Strengths”](#) strategy. We approach our dedicated sustainability strategy from an overarching environmental, social and governance (ESG) perspective and integrate it into our strategic planning.

As a subsidiary of Klöckner & Co SE, Duisburg, Germany, one of the world's largest producer-independent distributors of steel and metal products, Becker Stahl-Service is one of the largest service centers in Europe with its headquarters in Bönen, Germany, location. Our CO₂ emissions data is consolidated into one number for the organizations Becker Stahl-Service and Becker Aluminium-Service. The annual specific GHG emissions and material energy usage, with 2021 as the base year, have been calculated on a pro-rata material tonnage output basis for Scope 1 and 2. Scope 3, Category 1 emissions are directly attributed to Becker Aluminium-Service (BAS) (*). Our goals are in line with the SBTi goals of the Klöckner & Co Group.

Scope 1 & 2												
Base year 2019		2020	2021	2022	2023	2024	2025	2026	2027	2028	2029	2030
Becker Scope 1 & 2 (t CO ² e/yr)	BAS Scope 1 & 2 (t CO ² e/yr)	BAS Scope 1 & 2 (t CO ² e/yr)	BAS Scope 1 & 2 (t CO ² e/yr)	BAS Scope 1 & 2 (t CO ² e/yr)	BAS Scope 1 & 2 (t CO ² e/yr)	BAS Scope 1 & 2 (t CO ² e/yr)	BAS Scope 1 & 2 (t CO ² e/yr)	BAS Scope 1 & 2 (t CO ² e/yr)	BAS Scope 1 & 2 (t CO ² e/yr)	BAS Scope 1 & 2 (t CO ² e/yr)	BAS Scope 1 & 2 (t CO ² e/yr)	BAS Scope 1 & 2 (t CO ² e/yr)
3558	84	100	64	58	88	84	future values not yet determined and published					

Source: KCO file "2019-2024 GHG Inventory_CO2 Ziele Becker"

BAS file "BAS Scope 1-2 & 3.01 Daten – Emissionsplan_3_1_Kalkulation_13082025"

					CO ² Emissions Total		
Year	GHG category	Influence	Sub-Scope	Product	Quantity 2	Unit 2	Site
2019	Purchased goods and services	Emissions beyond influence	3.1	Aluminium coil & sheet	112.185,75	t Co2e	Bönen
2020	Purchased goods and services	Emissions beyond influence	3.1	Aluminium coil & sheet	80.387,23	t Co2e	Bönen
2021	Purchased goods and services	Emissions beyond influence	3.1	Aluminium coil & sheet	211.865,02	t Co2e	Bönen
2022	Purchased goods and services	Emissions beyond influence	3.1	Aluminium coil & sheet	278.764,64	t Co2e	Bönen
2023	Purchased goods and services	Emissions beyond influence	3.1	Aluminium coil & sheet	67.304,47	t Co2e	Bönen
2024	Purchased goods and services	Emissions beyond influence	3.1	Aluminium coil & sheet	241.949,52	t Co2e	Bönen

Source: KCO file 2024_CO2AI Export_Becker_Alu_v2

The entity-specific energy consumption data for the year 2024 is as follows:

Plant "Nord" / Becker Aluminium-Service GmbH								
Location: Bönen								
Energy assessment								
Year	Total energy entity specific (KW/h)	Energy share vs total consumption (%)	Electricity (KW/h)	Energy share (%)	Gas (KW/h)	Energy share (%)	Passenger car fuels (KW/h)	Energy share (%)
2024	2198810	22,08	1780392	17,88	280938	2,82	137480	1,38

Source: Becker Metals, Bönen facility, internal document "Energetische Bewertung" 01.01.2024 – 31.12.2024

Bönen, August 25, 2025

Jörg Kaib

CFO

Ralf Schmid

Managing Director

Rene Klöpper
Becker Aluminium-Service GmbH
Völklinger Str. 57
59199 Bönen

Expert Sustainability